

# 2024 Showcase of Stars

## Contestant Information Packet

Overall Event Schedule .....	3
Detailed Timeline for Contestants/Spectators .....	4
Venue Information.....	5
Address & Directions .....	5
Important Information.....	5
Parking .....	5
Loading Dock for Props .....	6
Stage Dimensions.....	6
Dressing/Changing Areas .....	6
2024 Contestants - Main Dressing (Females) – Troy Christian Elementary School Gymnasium.....	6
2024 Contestants – Main Dressing (Males) – Dressing Room A.....	6
2024 Contestants – Quick Change Room – Dressing Room B.....	6
2023 Winners – Main Dressing – Green Room.....	7
Dressing Room Maps/Diagrams.....	7
What to Wear .....	8
Admission Information & Purchase .....	8
Evening Wear Lineup .....	10
Pageant Judges .....	10
How Scoring Works.....	11
Saturday - Evening Wear & Preliminary.....	11
Advancing to Finals .....	12
Sunday Compulsory & Finals.....	12
Scoresheets.....	13
Dance Performance Scoresheet (Preliminary & Finals).....	13
Evening Wear Scoresheet .....	13
Compulsory (Junior & Senior Finalists Only).....	13
Questions? Need Help at the Event?.....	14



## Overall Event Schedule

### Friday January 26th

4:45PM - 6:30PM - Registration

5:45PM - 7:30PM - Production Rehearsal

7:30PM - 8:00PM - Secret Dance

Buddy Gift Exchange

### Saturday January 27th

8:00AM - Preliminary Competition

5:00PM - Evening Wear Competition

*Production Rehearsal Immediately*

*Following Evening Wear Until 9:00PM*

### Sunday January 28th

8:30AM - Production, Introduction of Contestants &  
Announcement of Finalists

9:30AM - Compulsory Competition\*

10:00AM - Finals Competition

2:00PM - Awards

*\*Junior & Senior Finalist Contestants Only*

Showcase of Stars

## Detailed Timeline for Contestants/Spectators

### Friday

- 4:45pm – 6:30pm – Contestant Registration & **Wristband Pickup**
  - o Tickets will be scanned, and wristbands provided for those who would like to skip the line on Saturday morning. **We strongly encourage wristband pickup on Friday evening!**
- 5:45pm – 7:30pm – Production Rehearsal – Meet near the stage
  - o 5:45pm – 6:30pm – All Age Division Production Choreography
  - o 6:30pm – 7:30pm – All Production Choreography
- 7:30pm – 8:00pm – Secret Dance Buddy Gift Exchange (Optional)

### Saturday

- 7:00am – Main Doors Open & Wristband Pickup (ticket is needed to scan)
  - o **NOTE: Wristbands will only be available for pickup until Noon!**
- 7:30am – Theater Doors Open (Must have a wristband to enter)
- 8:00am – 2:00pm - Prelims - **Be ready to perform 15 minutes prior to the time listed on the schedule!**
- 5:00pm – 6:30pm – Evening Wear Competition - Contestants Line Up by assigned group letter:

Group	Line Up Time	Group	Line Up Time
Group A	4:45pm	Group B	5:00pm
Group C	5:15pm	Group D	5:30pm
Group E	5:45pm	Group F	6:00pm
2023 Winners – 6:15pm			

- Immediately Following Evening Wear – Production Walkthrough – Plan to Stay Until 9:00pm

### Sunday

**NOTE: Wristbands will not be available for pickup on Sunday. Please be sure to pick up your wristband on Friday evening during registration or on Saturday between 7:00am and Noon.**

- 7:30am – Main Doors Open & All Contestants on stage in solo costume for final walkthrough
- 8:00am – Theater doors open (Must have a wristband to enter)
- 8:30am – Opening/Production - All Contestants & 2023 Winners
- 8:45am – Contestant Introductions and Finalist Announcements (by age group)
  - o Finals schedule will be published to website
- 9:25am – Compulsory competition for Junior & Senior finalists
  - o *Immediately following announcements, Junior & Senior finalists should line up in the designated area backstage for the compulsory competition*
- 10:10am – Finals - **Be ready to perform 15 minutes prior to the time listed on the schedule!**
  - o Didn't make finals this year?? Change back into your beautiful evening wear and come watch the show! 😊
- 1:45pm (approximately) – Awards
  - o **All Contestants** should line up in designated area backstage in Evening Wear Attire
  - o Announcement of Special awards and 2024 winners and Court by age division
  - o Once an age division is finished, those contestants will move to the sides with the court in the front so that the next age division can be announced
  - o After awards, winners and court are asked to stay for pictures as well as the 2023 winners

# Venue Information

## Address & Directions

Arbogast Performing Arts Center (APAC)  
500 S. Dorset Rd  
Troy, Ohio 45377

NOTE: IF COMING FROM NORTH OF EXIT 74 on I-75 S with bus and/or trailer be aware of a roundabout at the intersection of S. Dorset Rd and McKaig Ave, roughly 0.2 miles north of the APAC entrance. Alternative route: Proceed south on I-75S to exit 73, turn left on OH-55 heading 0.3 miles east to the intersection of OH-55 & S. Dorset Rd. Turn left on S.

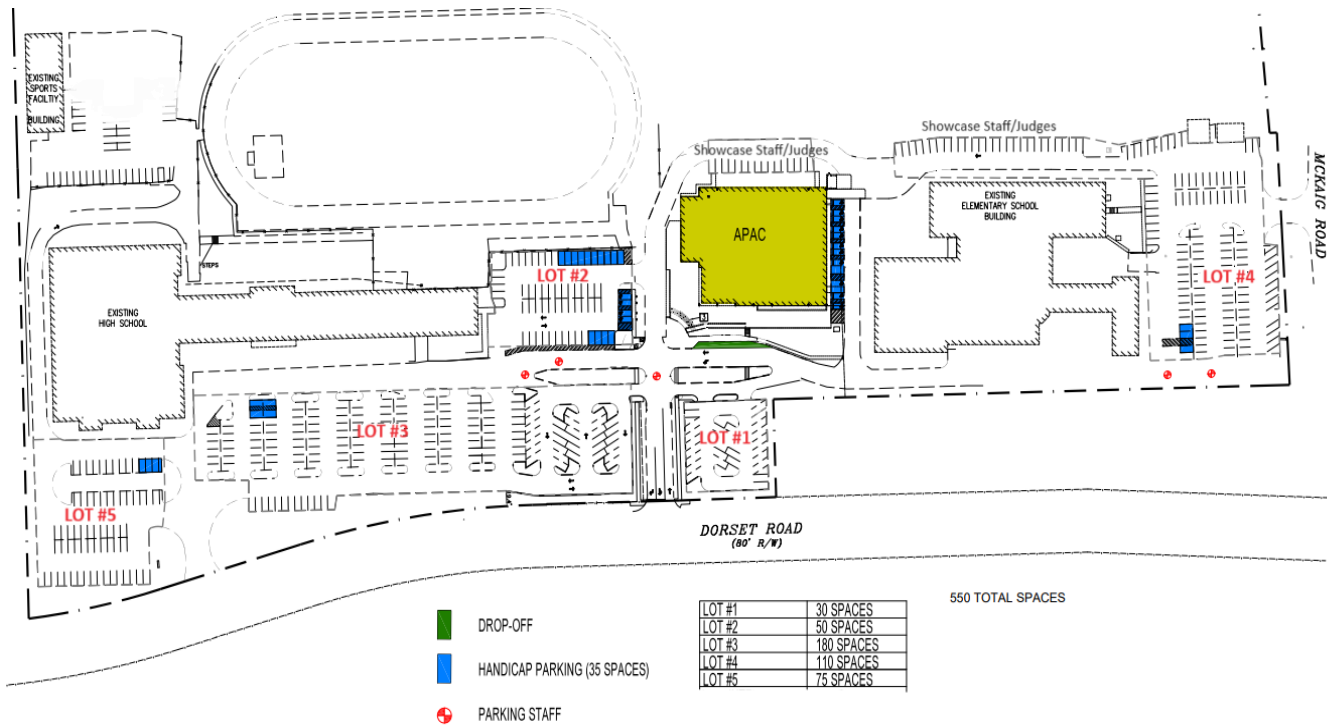
## Important Information

- **Bottled water only in the Auditorium**
- **No tape on surfaces or walls unless approved by APAC staff**
- **Restrooms - both sides of the 1st and 2nd levels**

## Parking

There are plenty of parking spaces, including handicap spaces, around the venue and all parking is free! Please note the areas behind the APAC building that are reserved for Showcase Staff/Judges. Please do not park in these areas. There is a drop-off area in front of the main entrance (highlighted below in green).

Please park in one of the following areas: LOT #1, LOT #2, LOT #3, LOT #4 or LOT #5. Handicap parking is also available and shown below in the blue spaces.



# APAC EVENT PARKING

## Loading Dock for Props

The loading dock is located on the northwest corner and loads directly into backstage. All props must be delivered on Friday evening during registration. Please email [info@scau.org](mailto:info@scau.org) if you have any questions.

## Stage Dimensions

NOTE: STAGE IS A CORNER STAGE and narrows into a “ V “ shape with max width at downstage proscenium opening and narrowest point at the most upstage centerline. Although this is a much bigger stage than the last few years, please still plan to utilize roughly 20’ x 48’ of the stage as we will have the center LED screen pulled down to the floor.



## Dressing/Changing Areas

### 2024 Contestants - Main Dressing (Females) – Troy Christian Elementary School Gymnasium

All female contestants will use the door on the north side of the APAC building to access this area. Contestants will have to walk outside, and it is approximately 16 feet from one door to the other. The yellow line in the photo below shows the path. Please note that anything placed on the gymnasium floor must have appropriate padding so that the floor is not damaged. Contestants will be responsible for any damage to the floor.

### 2024 Contestants – Main Dressing (Males) – Dressing Room A

All male contestants will use Dressing Room A located within APAC.

### 2024 Contestants – Quick Change Room – Dressing Room B

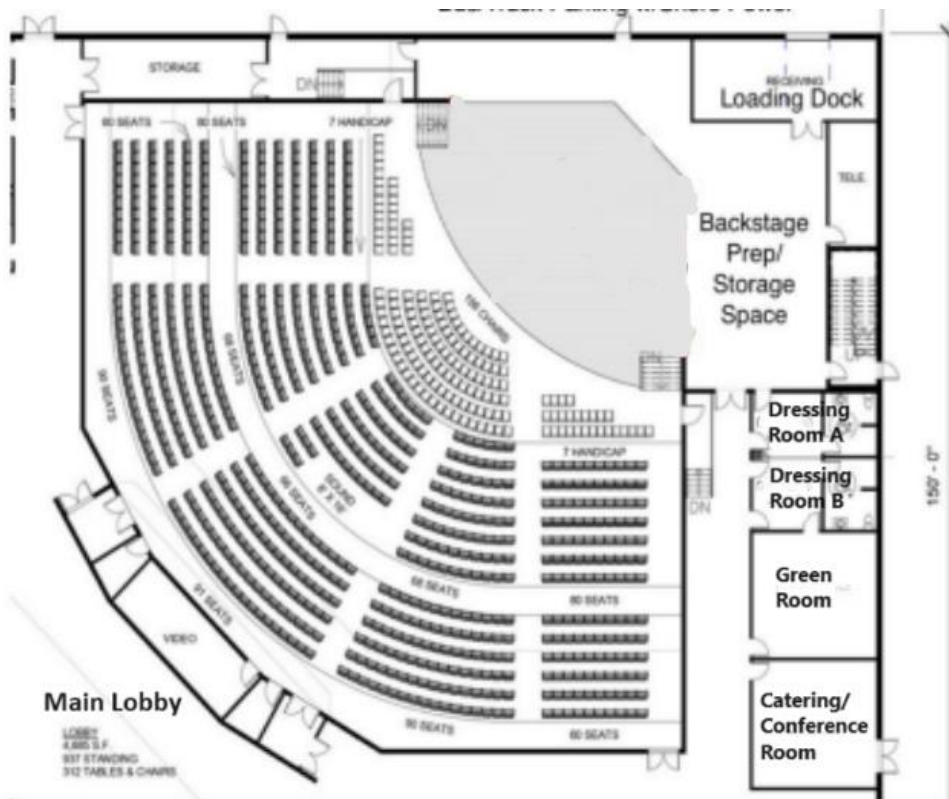
Any contestant that has two solos can utilize this room and change into their second costume.



### 2023 Winners – Main Dressing – Green Room

All 2023 Winners will use the Green Room as a dressing area. Please note that only Primary and Elementary Winners may have 1 female chaperone/coach to assist in this area if needed.

### Dressing Room Maps/Diagrams



## Performance Schedules

Schedules for the weekend can be found by clicking the link below. Please note that because there are dancer's names, the site is password restricted. Please contact your director, or [info@scau.org](mailto:info@scau.org), to obtain the password. <https://www.scau.org/contestant-schedules>

## What to Wear

	Friday	Saturday	Sunday
2024 Contestants	Pageant t-shirt and black dance bottoms. T-shirts will be provided prior to your production rehearsal. Bring dance shoes.	Arrive in solo costume for Prelims. Change into evening wear attire for 5pm return. Pageant t-shirt and black dance bottoms for production rehearsal.	Arrive in solo costume for Production. Junior/Senior finalists will stay in solo costume for compulsory. Non-finalists – change back into evening wear for awards. All contestants in evening wear for awards.
2023 Winners		Arrive in practice wear for the winner rehearsal. Semi-formal attire with 2023 sash and crown. Change into evening wear attire with sash and crown for 5pm return. Pageant t-shirt and black dance bottoms for production rehearsal.	Arrive in production costumes provided by Showcase on Friday. Classic and Select winners – after production ends, stay in production costumes and assist with handing out medals to finalists. Nova winners will change into solo costumes to prepare for exhibition performances. Classic and Select will change into solo costumes for exhibition performances. All 2023 winners in evening wear for awards.

## Livestream/Videography

Showcase America is excited to offer a **free** livestream this year for those friends/family that cannot make it to the venue. The livestream will be available on our YouTube channel, so be sure to click on the link and subscribe today! [Showcase America YouTube Channel](#)

We will also offer a downloadable link of the event - \$20 if purchased the weekend of the event or prior and \$30 after the event. Credit Cards, Paypal and Venmo will be accepted at the venue. No cash.

[Videography Purchase](#)

## Admission Information & Purchase

Each contestant will receive 1 complimentary ticket for a parent/guardian/friend/family member. Ticket purchase for a contestant is not necessary. A contestant may enter the theater only if they are in a pageant T-shirt, a costume or evening wear.

Additional tickets can be purchased by clicking the "Purchase Tickets Now" button on this page: <https://www.scau.org/admission-tickets>

Price is per person and good for the entire weekend. Anyone occupying a seat must purchase a ticket. Children under 2 are free if sitting on a lap. Advanced purchase is not required, but cash is not accepted at the time of registration.



## Day of Registration Information

There will be several stops during the registration process. Please be sure to visit each area.

### Check-in

At this station we will make sure that each contestant has done the following:

- Submitted Evening Wear Bio
- Submitted Photo/Video Release
- Completed Payment (Balance was due by 01/05/24)
- Previously Completed an Emergency Medical Form

*The complimentary admission wristband will also be provided at this station.*

### Programs

At this station, you will have an opportunity to purchase the event program. Programs are \$7 each. Credit Cards, Paypal and Venmo will all be accepted. No cash.

### T-Shirts

At this station you will receive your T-shirt in the size indicated through the required forms.

### Videography Purchase

At this station you will have the option to purchase the video of the entire weekend for just \$20! After the event you can still purchase the video, but the price will increase to \$30. Credit cards/Venmo/PayPal only. No cash sales.

### Music Check & Name Pronunciation

At this station you will check your music that you submitted and provide the correct pronunciation of your first and last name. You will also need to let the staff know where you enter the stage from for your performance or if you start off stage.

### Evening Wear Modeling

We will not have an evening wear walkthrough this year, but the diagram below will help contestants know the pattern. This is a change in the 5-star pattern from last year, but it still provides the contestants with more time on stage. Please read the notes under the diagram in the link below. We will also have a red carpet that lays the path that the contestants will be walking. The carpet will be taped down and secure.

[Click here for the Evening Wear Modeling Diagram](#)

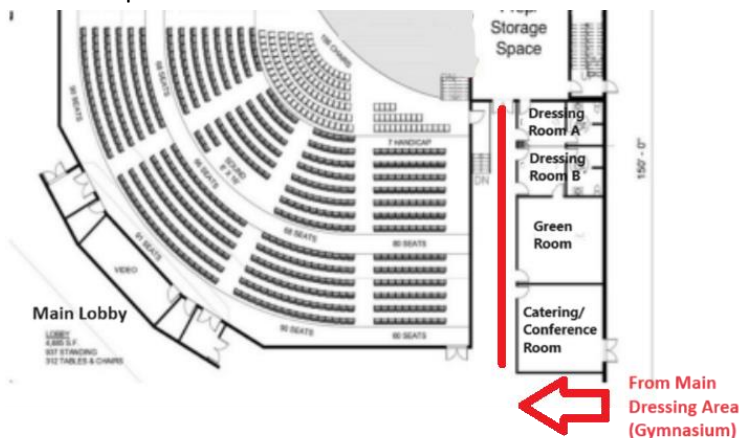
### Secret Dance Buddy Information

This year we will exchange gifts with the **same age group** after production rehearsal on Friday evening! If you are participating in this exchange, please bring your gift to the production rehearsal Friday evening.

## Evening Wear Lineup

To assist contestants during the Evening Wear portion of the competition, we will line the hallway leading to the backstage area with names on the walls – see red line below. When it is time, contestants should find their name on the wall and wait for directions from a Showcase Staff member.

This year we have assigned groups so that not all contestants are lining up at the same time. Additional details are available in the [performance schedules section on our website](#). Please note that because there are dancer’s names, the site is password restricted. Please contact your director, or [info@scau.org](mailto:info@scau.org), to obtain the password.



## Pageant Judges

Although the below list is confirmed, please note that it is subject to change at any time. Judge’s bios are also available on the website ---→ [2024 Showcase of Stars Spectacular Judges](#)

\*Judging panels will not be the exact same line up for Prelims and Finals

Evening Wear	Prelims	Compulsory	Finals
Amy Vandergriff	Ali June	Ali June	Ali June
Carole Taylor	Amy Vandergriff	Amy Vandergriff	Amy Vandergriff
Dawn Hostetler	Arabia Richardson	Arabia Richardson	Arabia Richardson
Karie Seubert	Carole Taylor	Dawn Hostetler	Carole Taylor
Kayla Diltz	Dawn Hostetler	Karie Seubert	Dawn Hostetler
Madalaina Welton	Heather Kamer	Madelina Welton	Karie Seubert
Roni Peterson	Karie Seubert	Roni Peterson	Madalaina Welton
Scott Decola	Madalaina Welton	Scott Decola	Mary Laile
	Mary Laile		Reagan Crandall
	Reagan Crandall		Roni Peterson
	Roni Peterson		Scott Decola
	Scott Decola		Stephanie Moore

## How Scoring Works

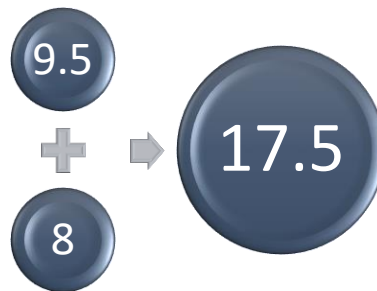
### Saturday - Evening Wear & Preliminary

The Evening Wear score has a maximum total of 20 points (2 judges with a maximum of 10 points each.) If a contestant is competing with more than one routine, the Evening Wear score will be added to all routines.

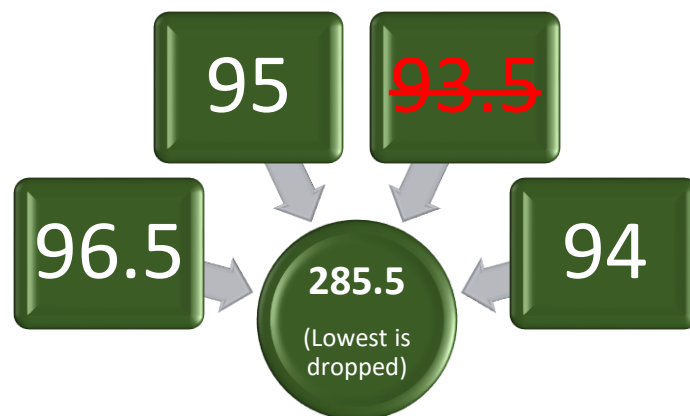
There are 4 Preliminary judges on each panel, **but the lowest score is dropped**. Therefore, the Preliminary performance score has a maximum total of 300 points.



For example, Crysten receives the following scores in the Evening Wear portion of the Competition:



She also receives the following scores in the Preliminary Dance Performance portion of the Competition:



So, Crysten's scores to determine if she would advance to Finals would look like this:

### Advancing to Finals

After the completion of Evening Wear and Preliminaries, all scores are reviewed and the number of contestants that advance to finals is typically\* determined by where the largest gap in score occurs. For example, in the scenario below the top 5 (highlighted) would advance as there is a 6-point gap in between 5<sup>th</sup> and 6<sup>th</sup> place.

Contestant A	399.5
Contestant B	398
Contestant C	397.2
Contestant D	396.5
Contestant E	396
Contestant F	390
Contestant G	388
Contestant H	385
Contestant I	384.5
Contestant J	383

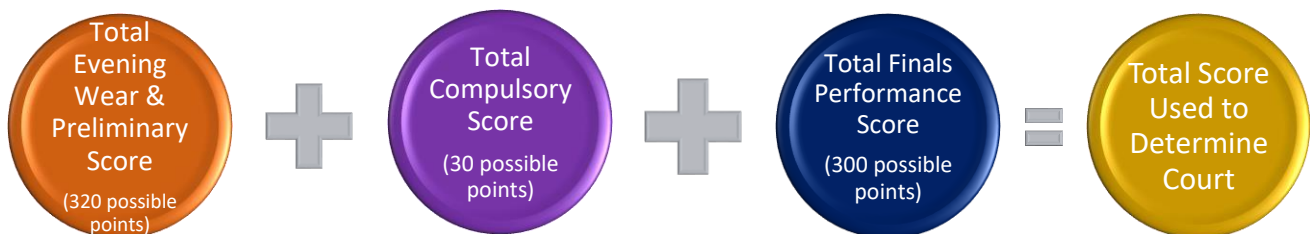
*\*Showcase reserves the right to determine the best number of contestants to move forward.*

### Sunday Compulsory & Finals

Once a contestant advances to Finals, the total score above (orange) advances with them.

The compulsory performance consists of the choreography that the contestants learned for production. Only Junior and Senior finalists will compete in this competition. The Compulsory score (purple) has a maximum total of 30 points (4 judges with a maximum of 10 points each and the lowest score is dropped).

There are 4 Finals judges (3 judges will be different from the preliminary panel) on each panel, but **the lowest score is dropped**. Therefore, the Finals performance score (blue) has a maximum total of 300 points.



[Click here for a printable version of how the scoring works](#)

## Scoresheets

### Dance Performance Scoresheet (Preliminary & Finals)

Each judge will score the contestants in the following areas during the Preliminary & Finals (if applicable) performance(s).

<b>Dance Technique (0 – 20 Points)</b>	Accuracy of Body Positions, Arm Positions/Extensions/Levels, Leg Positions/Extensions/Levels Turnout/Foot Positions, Turn/Jump Technique, Control, Posture
<b>Execution (0 – 20 Points)</b>	Accuracy/Unison of Movement, Intensity, Exactness/Preciseness of Movement, Snap/ Precision, Energy Level, Memory, Timing/Rhythm
<b>Choreography (0 – 20 Points)</b>	Interpretation of Music/Musicality, Difficulty, Uniqueness of Movement, Creativity/Originality Variety, Style, Category Requirements Met, Any Tumbling/Gymnastics used should enhance the dance, not be the focus
<b>Show Design (0 – 20 Points)</b>	Design of Dance creates Mood/Theme, Overall General Effect, Use of Entire Space/Stage, Effective Beginning/Middle/End, Use of Dance to make Smooth Transitions, Change of Pace, Visual Patterns/Formations
<b>Showmanship/Presentation (0 – 20 Points)</b>	Enthusiasm/Confidence/Genuineness Displayed, Audience Connection /Eye Contact, Appropriate Facials/Smile, Emotional Appeal, Body Language, Stage Presence, Costuming/Accessories, Grooming/Makeup/Hair

### Evening Wear Scoresheet

Each judge will score the contestants in the following areas during the Evening Wear competition:

<b>General Appearance (0 – 5 Points)</b>	Make-up, Shoes, Hairstyle, Condition of outfit, Accessories
<b>Presentation (0 – 5 Points)</b>	Poise, Smile, Carriage, Tempo

### Compulsory (Junior & Senior Finalists Only)

Each judge will score the contestants in the following areas during the Compulsory competition:

<b>Execution (0 – 4 Points)</b>	Accuracy/Unison of Movement, Intensity, Exactness/Preciseness of Movement, Snap/ Precision, Energy Level, Memory, Timing/Rhythm
<b>Technique (0 – 4 Points)</b>	Accuracy of Body Positions, Arm Positions/Extensions/Levels, Leg Positions/Extensions/Levels Turnout/Foot Positions, Turn/Jump Technique, Control, Posture
<b>Showmanship (0 – 2 Points)</b>	Poise, Enthusiasm/Confidence/Genuineness Displayed, Audience Connection/Eye Contact

## Questions? Need Help at the Event?

Finding Help at the Event - Have a question or need assistance with something? Just look for someone wearing one of our denim heather colored pageant t-shirts!