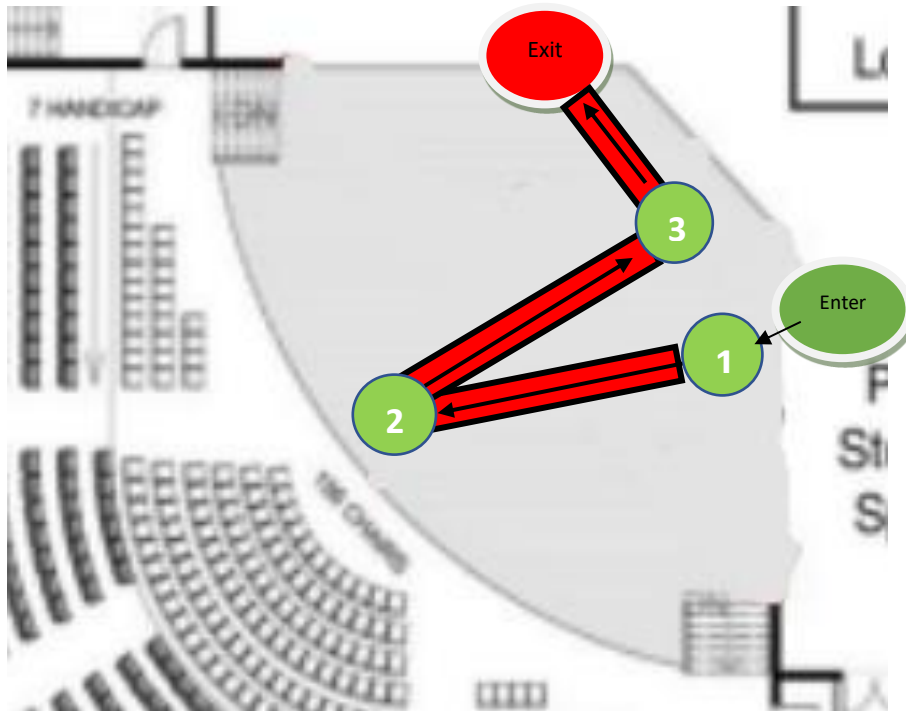


## 2024 Evening Wear Modeling Diagram



Location	Notes
Enter	Contestants will enter from stage left and walk a few steps to location 1.
1	Contestants will pause and pose at location 1 for 5-7 seconds and then walk towards location 2 while continuing to face the audience.
2	Once contestants arrive at location 2 at the center of the stage they will pause and pose (facing forward) for 5-7 seconds. They will then perform a step turn and proceed to location 3 (contestants back will be to the audience).
3	Once contestants arrive at location 3 they will complete a step turn so they are facing the audience again, and then pause and pose 5-7 seconds.
Exit	After the 5-7 second pause at location 3, contestants will then walk towards the exit location on stage right. The left side of their body will face the audience, but head still focused on the audience/judges.